



Association of Business  
Leaders in Education

# Welcome

## ABLE Spring Conference 2025



# Atom IT



# Hello!

I'm Emma Cripwell





# House Keeping



No fire alarms  
planned today.



Buffet Lunch will be  
in the restaurant



Water stations are in  
the exhibition area not  
in the meeting rooms



Turn mobiles to silent

# Meet the Committee

The ABLE committee work tirelessly behind the scenes to produce our conferences, exhibitions, business masterclasses and reward app.



**Frances Rowland**  
**Director**



**Jo Robinson**  
**Business & App**  
**Support**



**Neil Beeson**  
**Finance**



**Clare Stokes**  
**Exhibitions**

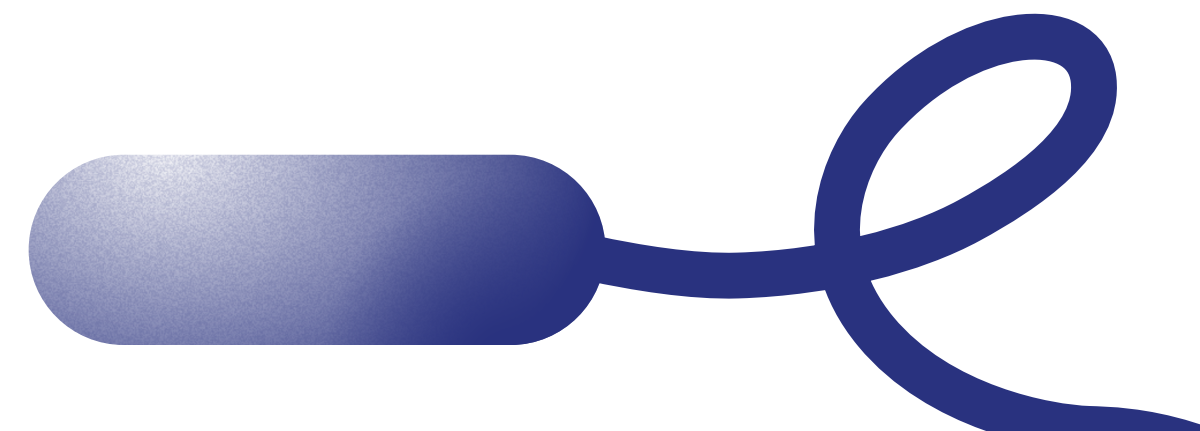


**Varinka Strong**  
**Masterclasses**

# New Members

**See me after the keynote, I'll answer any questions you might have and introduce you to some people in your new business network!**

*Connect, collaborate, and grow with us!*





# Raffle Tickets

Today's  
Chosen Charity



**Robin Hood**  
Disabled Riders

**WE NOW ACCEPT CARD PAYMENTS!**





# Building connections



We foster connections through conferences and business masterclasses. It's about building a robust and collaborative network that can support your journey as a School Business Leader. **New for 2025 is a forum on the ABLE Rewards App.**



# Continuous learning

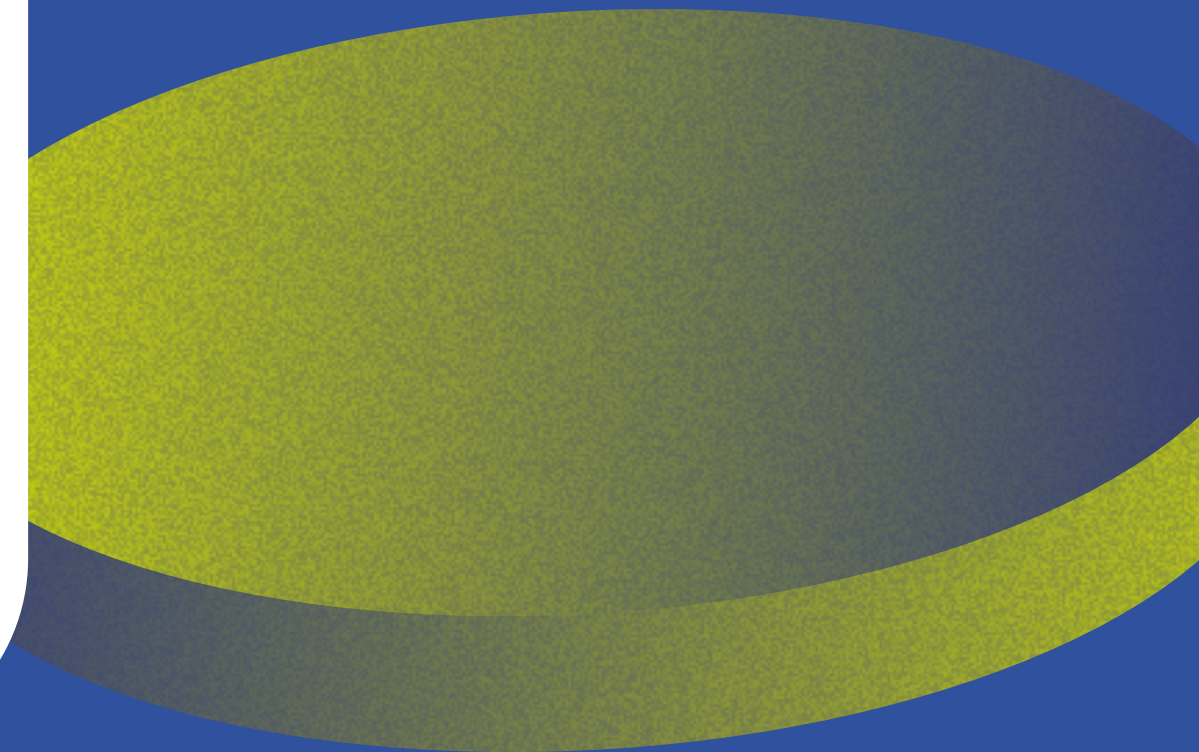
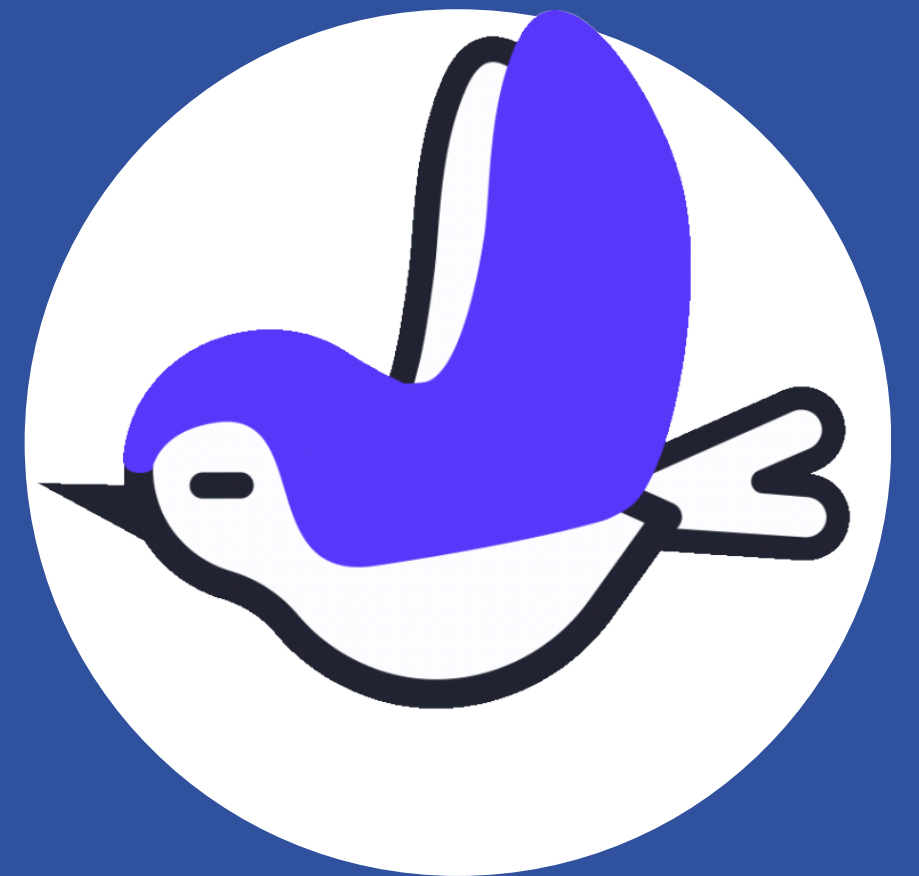
Growth is a continuous journey. We offer opportunities for professional development to help you expand your skills and career.



# Are you leaving!?



If you are leaving the profession, please let us know so that we, say thank you, farewell and good luck and can contact your replacement.





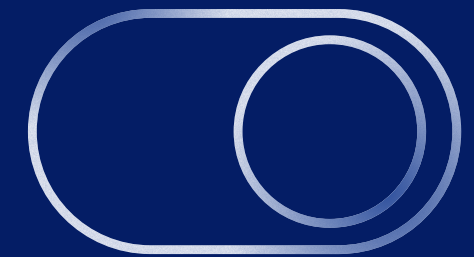


# Coming Soon!

**ABLE School Business Leader  
Recognition Awards**



# Feedback



Your feedback is essential; it helps us shape future events. The link to the feedback form is available on the app under 'COMPLETE EVALUATION'



Find and follow the conversation  
on Social Media.

Take photos, share stories and use  
our Hashtag!

# #ABLEConference

# Points Mean Prizes!

**Engage with Exhibitors  
to collect points**





# Collect Your Prize!

Kerry Reynolds -£50 Amazon

Janet Molyneux- £50 Amazon

Suki Kaur- £25 Amazon

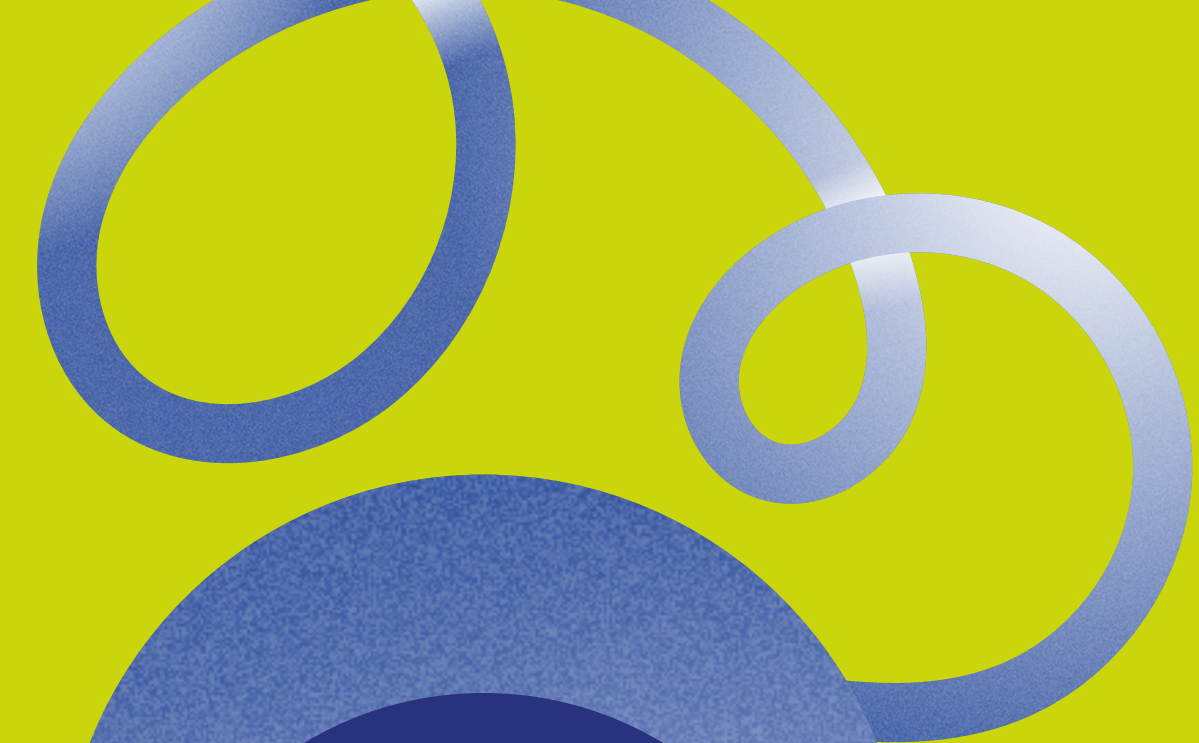
Nicky Hodgson- £25 Amazon

Beverley Dale- Chocolates

Kathryn Carlyle- Butlin- Chocolates

Bev Murphy- Chocolates

Sarah Chadwick- Prosecco





# New Champion Supplier





# Free Access to Leisure Facilities

Bally Patel  
Natalie Collins  
Louise Dove





# ABLE Partner



Gary Hardy

**Atom IT**





# ABLE Partner



Andrew Springhall





# ABLE Partner



Hannah Wharmby





**Sponsor**



**Arbor**



# Key Note Speaker

Moving Feeds Your Positive  
Mental Health - Charm Daley



# Key Note Speaker

Tie up your shoeLACES – Don't  
let life trip you up! –  
Frederika Roberts



Photo © 2019 Hubert Hung